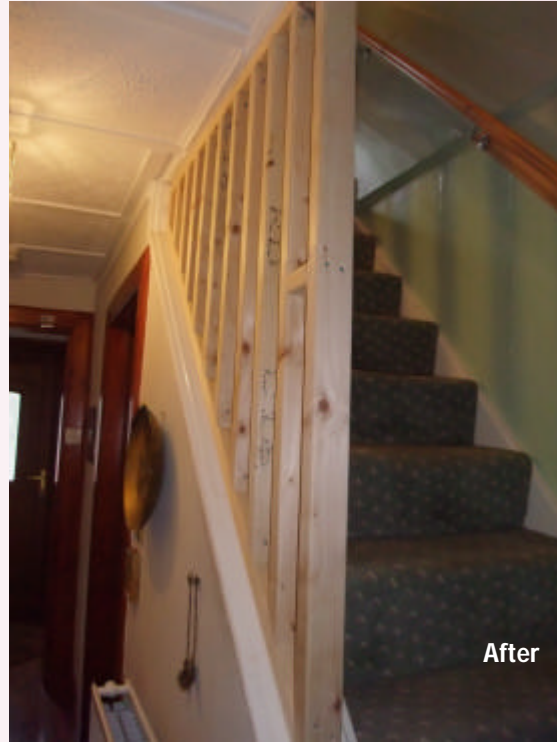




East Ayrshire

Care and Repair

Unsafe stairwell—in-filled with wooden balustrade to make safe for client.



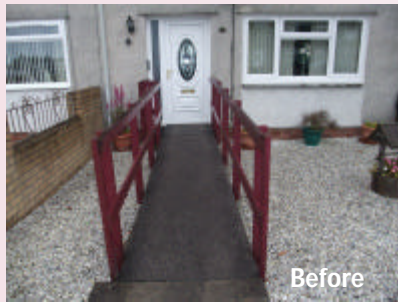
Client advised steps slippery therefore —a non-slip safe tread was applied.



In partnership with

East Ayrshire

Care and Repair



Existing aged wooden ramp was refurbished for Client.



Water penetration via chimney—chimney removed and gas flu vented for Client.



In partnership with

East Ayrshire

Care and Repair

Testimonials

"I would like to thank Care & Repair for the excellent help I received. Thanks to Mr Charlie Murphy who co-ordinated the work, it all went very smoothly. My husband and I are delighted with the job. Thanks to all concerned."

"Care & Repair is a great service, the tradesman did an excellent job, kept the cowboys away."

"The service gives peace of mind when you live alone, hope it goes from strength to strength."

In partnership with

